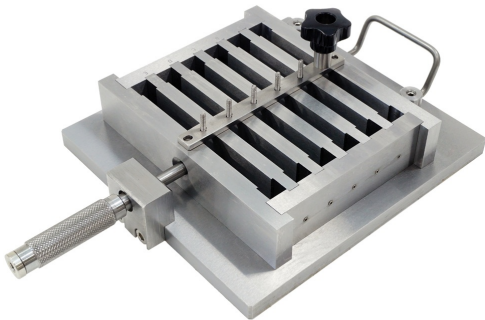


DATA SHEET

Mould for Crack Bridging

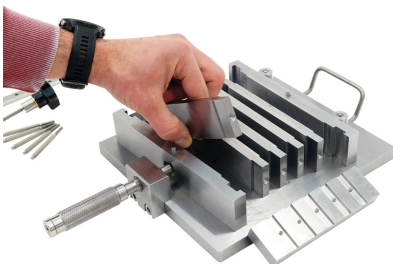


General description

These mould consist of six horizontal compartments so that six prismatic specimens ($12 \pm 0,1$) mm \times (40 ± 1) mm \times (160 ± 1) mm, with a square hole, with ($4 \pm 0,1$) mm side, in the middle of the narrowest face, can be prepared simultaneously.

Standards

- EN 14891



Products

65-L0010/C

Six gang mould 12 x 40 x 160 mm according to EN 14891.